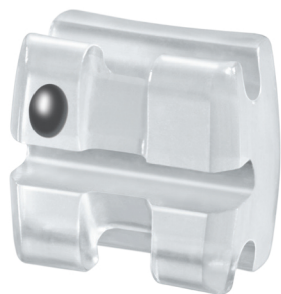


# NeoMaestro™

Premium Bracket Systems

A Family of Brackets that All Work in Unison.



# Strategy. Research. Evolution.

## NeoMaestro Premium Bracket Systems

In 2009 the vision began at *Ortho Organizers*® to develop the ultimate twin-bracket system. One where the brackets were interchangeable between aesthetic and metal for convenient and cost-efficient bracketing. This unique system would provide clinicians optimal benefits and conveniences, while delivering patient comfort and successful treatment outcomes. The Company's Research and Development team spent laborious time analyzing twin brackets currently available in the market, as well as soliciting feedback from clinicians. The result is a modern day success: *Maestro*® Metal brackets, *NeoLucent*® *Plus*™ Polycrystalline Ceramic Brackets, and *NeoCrystal*™ Sapphire Ceramic Brackets all designed for interchangeability.

The three twin-bracket lines offer uniform design features that are unique to only these systems. They allow a doctor to utilize aesthetic brackets in the anterior and metal brackets in the posterior without comprising patient treatment.

- Comparable bracket sizes – Optimal bracket interchangeability
- Compatible In/Out – No wire compensating bends required between bracket transitions
- Same bracket base compound contours – Consistent adaptation to the teeth
- Equivalent bond strength – Consistent and reliable debonding between bracket systems
- Three twin-bracket material options – Ability to cater to patient/doctor preferences and save money
- Harmonious *Maestro* Buccal Tubes – Complete system approach
- Consistent prescriptions – Ability to meet clinician preferences on torque & tip, and can mix and match to meet clinician preferences on Rx values
- Uniform color-coding – Easy bracket identification

## Comparable Bracket Sizes:

The family of brackets were designed and developed with a common size in mind to give you the same feel and handling as you work with each bracket.



**Maestro Bracket**  
Premium Stainless Steel



**NeoLucent Plus Bracket**  
Polycrystalline

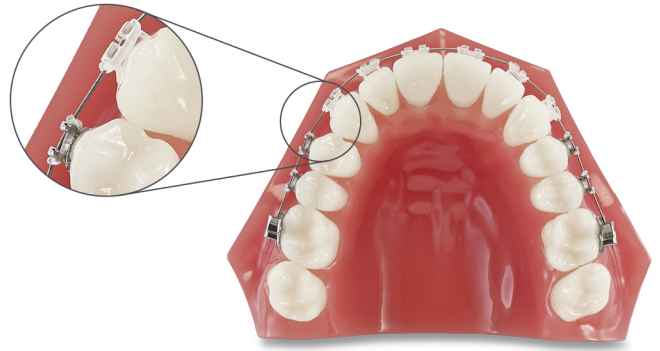


**NeoCrystal Bracket**  
Monocrystalline



## Compatible In/Out:

The complete *NeoMaestro* Family of brackets has compatible in/out's that allow you to easily mix our aesthetic *NeoLucent Plus* Ceramic Brackets or *NeoCrystal* Sapphire Ceramic Brackets with our *Maestro* Metal-Twin Brackets. Due to the exact tolerances between the brackets, there is no need for wire bends as you transition from the anterior aesthetic brackets to the metal brackets in the posterior.



## Same Bracket Base Compound/Contours:

This ensures that you experience the same optimized fit to tooth morphology no matter if you are working with a *Maestro*, *NeoLucent Plus*, or *NeoCrystal* Bracket.



Maestro Bracket



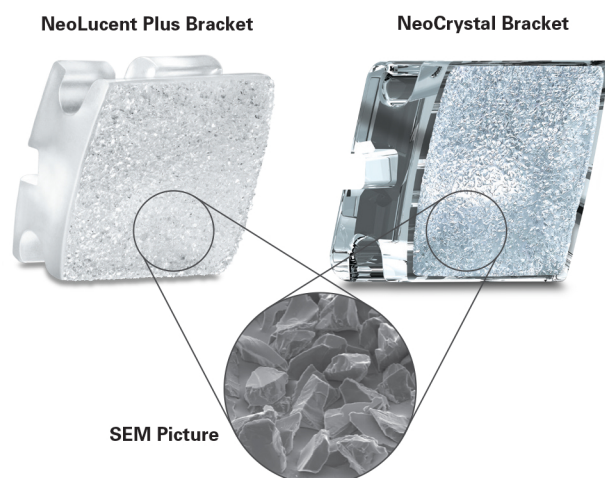
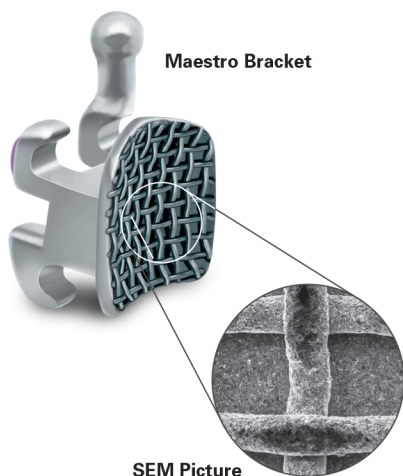
NeoLucent Plus Bracket



NeoCrystal Bracket

## Equivalent Bond Strength:

Whether you are working with the *Maestro* Bracket's 80-gauge mesh pad, *NeoLucent Plus* or *NeoCrystal* Bracket's propriety *Crunch COAT™* Base, you will have the same bonding experience. Our propriety *Crunch COAT* Base behaves similar to our 80-gauge mesh pad. In addition, both bases provide a easy surface area for bond strength.

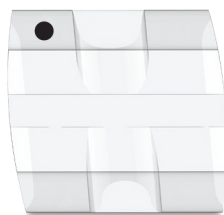


## Three Twin-Bracket Material Options:

The three style of brackets that compose the *NeoMaestro* Bracket System are built upon a true twin-bracket design with torque in base.



**Maestro Bracket**  
Premium Stainless Steel



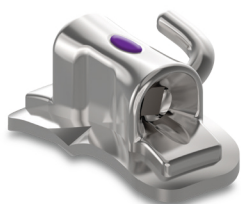
**NeoLucent Plus Bracket**  
Polycrystalline



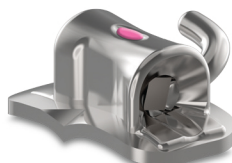
**NeoCrystal Bracket**  
Monocrystalline

## Harmonious Maestro Molar Buccal Tubes:

*Maestro* Buccal Tubes complete the *NeoMaestro* Family of Brackets. They have a large funnel entrance, side-grip areas, and color-coding to make for easier placement, position, and identification. All three bracket systems can be utilized with our bondable or weldable 1<sup>st</sup> and 2<sup>nd</sup> molars for optimized inventory.



**Maestro 1<sup>st</sup> Molar**  
Buccal Tube



**Maestro 2<sup>nd</sup> Molar**  
Buccal Tube

## Consistent Prescriptions:

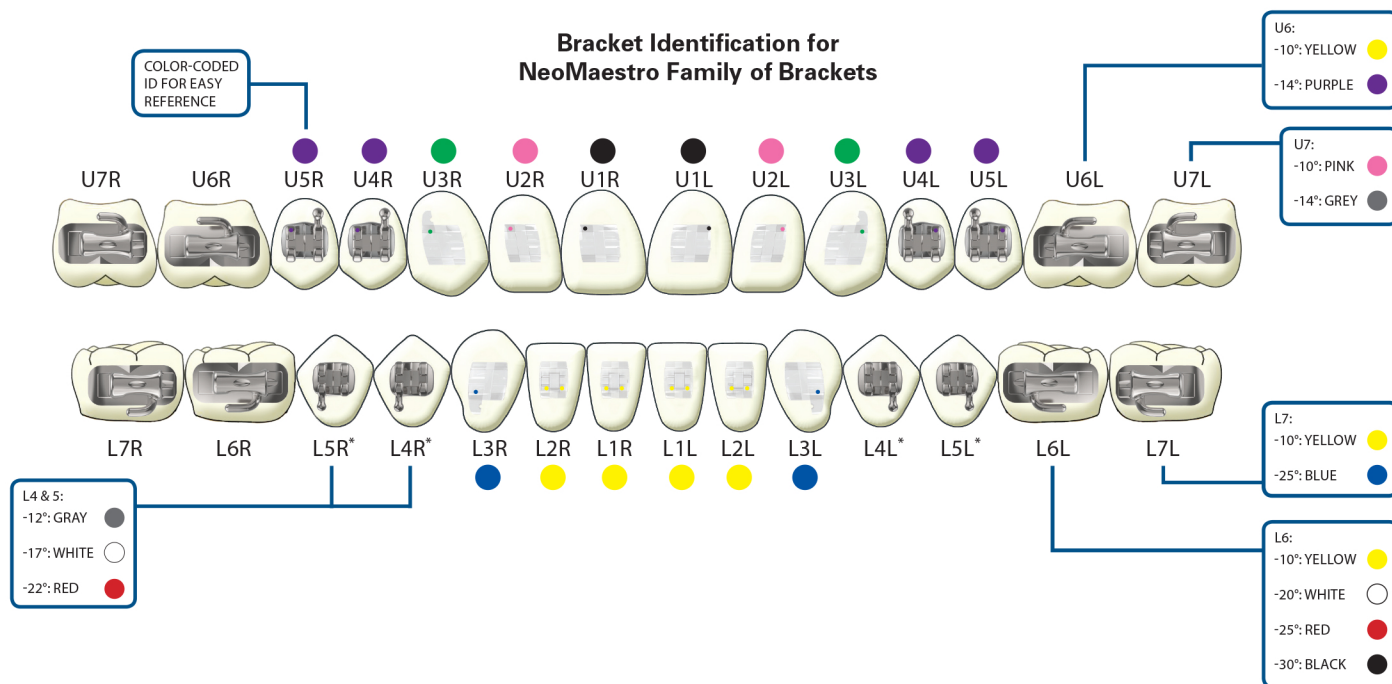
The three bracket systems are offered in the same prescriptions so that brackets can easily be mixed and matched, while still resulting in the same optimal treatment outcome that you are accustomed to receiving.

MAXILLARY	CENTRALS			LATERALS			CUSPIDS			1ST BICUSPIDS			2ND BICUSPIDS		
	TRQ.	ANG.	ANTI-ROTATION	TRQ.	ANG.	ANTI-ROTATION	TRQ.	ANG.	ANTI-ROTATION	TRQ.	ANG.	ANTI-ROTATION	TRQ.	ANG.	ANTI-ROTATION
Roth	+12°	+5°	0°	+8°	+9°	0°	-2°	+13°	4°M	-7°	0°	2°D	-7°	0°	2°D
McLaughlin, Bennett, and Trevisi	+17°	+4°	0°	+10°	+8°	0°	-7°	+8°	0°	-7°	0°	0°	-7°	0°	0°
McLaughlin, Bennett, and Trevisi (0 torque on 3's)	+17°	+4°	0°	+10°	+8°	0°	0°	+8°	0°	-7°	0°	0°	-7°	0°	0°
MANDIBULAR															
Roth	-1°	0°	0°	-1°	0°	0°	-11°	+7°	2°M	-17°	0°	4°D	-22°	0°	4°D
McLaughlin, Bennett, and Trevisi	-6°	0°	0°	-6°	0°	0°	-6°	+3°	0°	-12°	2°	0°	-17°	2°	0°
McLaughlin, Bennett, and Trevisi (0 torque on 3's)	-6°	0°	0°	-6°	0°	0°	0°	+3°	0°	-12°	2°	0°	-17°	2°	0°



## Uniform Color-code Identification:

Easily identify brackets between the *NeoMaestro* Bracket Systems, as similar color-code ID markings are used. Looking at a black ID dot on the distal gingival tie-wing of either a *Maestro*, *NeoLucent Plus*, or *NeoCrystal* Bracket, you will confidently know it is an upper right central.



## Options for Metal/Aesthetic Bracket Kits:

To help simplify your ordering process we have developed 5x5 kits that are composed of both aesthetic and metal brackets. You will receive aesthetic brackets, based on your choice of either *NeoCrystal* or *NeoLucent Plus* Ceramic Brackets, for the 3x3 section, and *Maestro* Brackets for the bicuspids.

All kits U/L 5x5 (3x3 aesthetic brackets with metal brackets on 4's and 5's. Hooks on 3's, 4's, and 5's)\*

RX	NEOCRYSTAL/MAESTRO KITS		NEOLUCENT PLUS/MAESTRO KITS	
	.018	.022	.018	.022
Roth	714-296-NM	714-396-NM	704-296-NM	704-396-NM
McLaughlin, Bennett, & Trevisi	714-296MC-NM	714-396MC-NM	704-296MC-NM	704-396MC-NM
McLaughlin, Bennett, & Trevisi (0 torque on 3's)	714-096MC-NM	714-196MC-NM	—	—



The *NeoMaestro* Bracket Systems are manufactured in the United States, emphasizing *Ortho Organizers* dedication to providing world-class products to meet your every orthodontic need. As a full service partner, we offer solutions that diversify your treatment options and help expand your practice.



Subscribe to our eNews: [OrthoOrganizers.com/eNews](http://OrthoOrganizers.com/eNews)

For more information on our products, orthodontic laboratory services, and educational offerings, please contact us:

Customer Service: 888.851.0533

In the U.S.: 800.547.2000

Outside the U.S.: +(1) 760 448 8600

Canada: CERUM 800.661.9567

To fax an order: 800.888.7244

To fax an order outside the U.S.: +(1) 760 448 8607

To email an order: [USASales@OrthoOrganizers.com](mailto:USASales@OrthoOrganizers.com)

To email an order outside the U.S.:

[IntlOrders@OrthoOrganizers.com](mailto:IntlOrders@OrthoOrganizers.com)



P: 1300 ORDERZ (673 379)

E: [sales@naol.com.au](mailto:sales@naol.com.au)

© 2013 Ortho Organizers, Inc. All rights reserved. PN 999-275 06/13

\**Ortho Organizers*® prescription does not imply endorsement by the doctor(s).  
Bracket images are not representative of actual size, or ratio to other brackets.

