

CARRIERE®

SLX 3D™

THE PERFORMANCE REVOLUTION

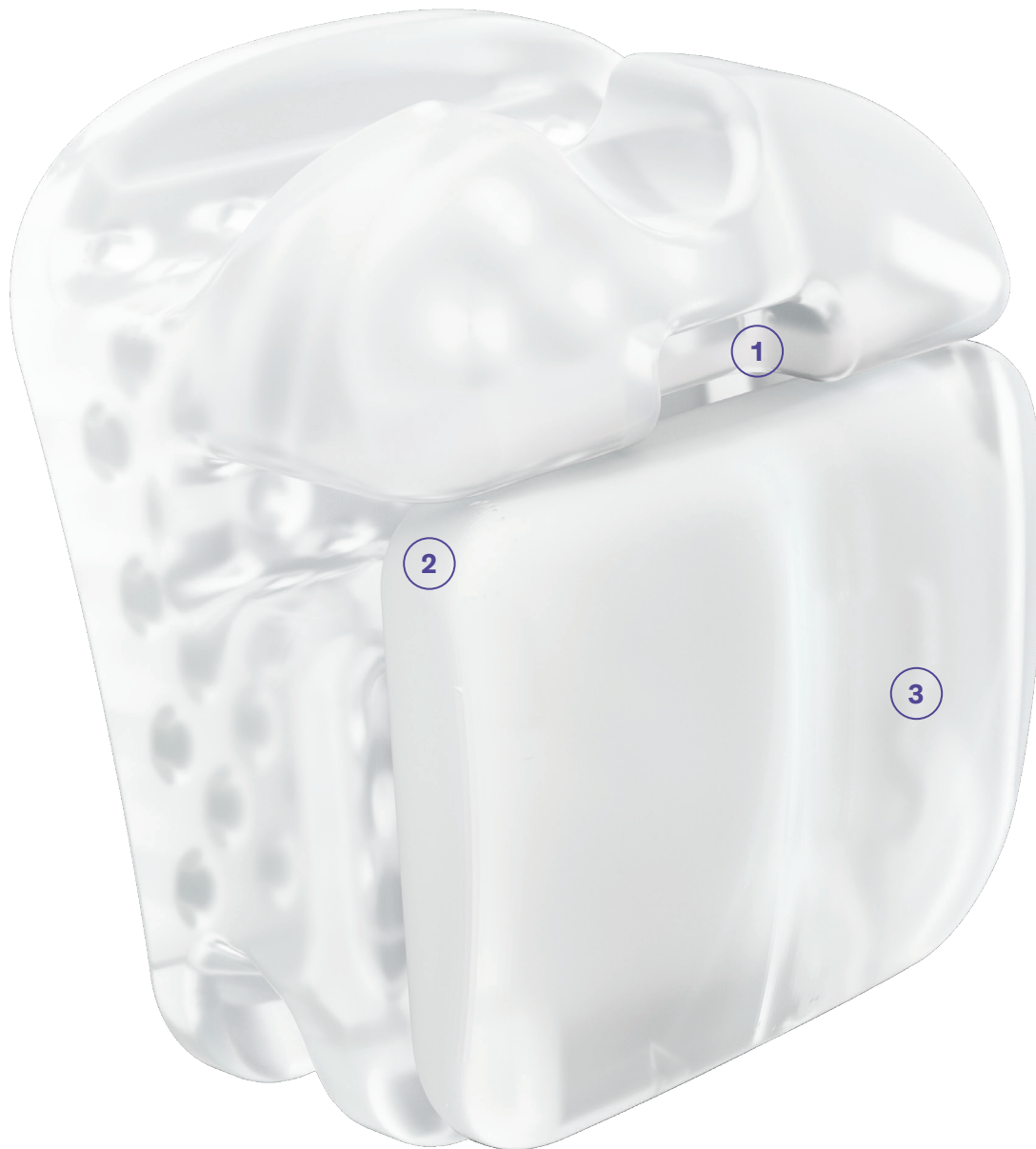
Designed for you,
your staff & your patients
with no compromises.



ORTHO®
Organizers
A HENRY SCHEIN® COMPANY

CARRIERE®

SLX3D™



1

DO THE TWIST

With a feather touch and slight twist of the instrument, the slide is propelled to the open and locked position.

2

COVER IT UP

Full M/D slot coverage provides unmatched rotational control, to help ensure that you finish faster.

3

FEEL THIS

The smoothest brackets we've ever made.
Oh so incredibly smooth,
oh so comfortable.

UNMATCHED CLINICAL CONTROL

Introducing the Carriere SLX 3D Bracket System

The dedication to practice efficiencies and to advancing the state-of-the-art of patient care will be evident when you experience the beauty, comfort, and the extraordinary performance of the all-new **Carriere® SLX® 3D™ System**.



■ Don't bend wire, like a pro

With proven and precise torque values, in/out thicknesses and slot depths, the **SLX 3D Bracket** is designed to ensure less wire bending so you can spend more time doing anything but wire bending.



WIDE

Centrals
& cuspids



MEDIUM

Bicuspids



NARROW

Lower & upper
laterals

■ One size doesn't fit all

The **SLX 3D Bracket System** has narrow brackets for narrow teeth, and wide brackets for wide teeth - because size matters when it comes to rapidly securing rotational control and ideal tooth positioning.



CLEAR

Mushroom shaped
pylons for secure
retention



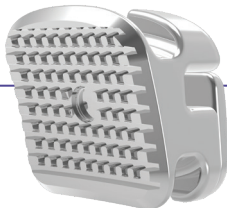
■ Guard rails aren't just for highways

Our exclusive Adhesive **Guard Rail™ Technology** (AGR) directs excess adhesive to the sides for fast, easy clean up.



METAL

Micro-etched
pylons



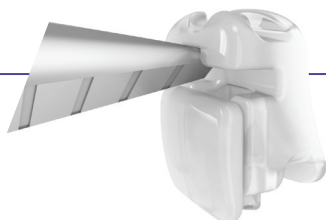
■ Easy on, easy off

Our compound contour bases are designed to “fit like a glove”, while the beveled base edges aid in quick and clean removal.



EZ TWIST

Micro-etched
pylons



■ Just do the twist

Our proprietary new **EZ Twist®** feature brings a new level of staff joy and patient comfort to your practice. For fast, comfortable wire changes, **JUST DO THE TWIST!**

A REVOLUTIONARY 3-WIRE SEQUENCE

SAGITTAL FIRST

Integral to the **SAGITTAL FIRST™** Treatment Philosophy is the use of the **Carriere® Motion 3D™** Appliance to correct AP discrepancies and stimulate initial tooth movement.

This fosters easier transitions into larger wires earlier in treatment, less time in braces, and shorter overall treatment times.

M-SERIES™ WIRES

Introducing the All-New **Carriere M-Series™ Wires**, including .015 **Cu™ Nitanium® Wire** and the innovative 3-Wire Sequence. **M-Series Wires** are designed to:

- Enable a simplified wire progression protocol
- Reduce the number of wires used
- Finish cases in about 12 months

3—6 MONTHS

MOTION 3D APPLIANCE

CLASS I PLATFORM ESTABLISHED



8—10 MONTHS

M-SERIES WIRES



M-SERIES WIRE SEQUENCE - FOR METAL BRACKET SYSTEMS

	WIRE NAME	DESCRIPTION	OBJECTIVE	TIME IN TREATMENT	NUMBER OF APPTS. (5-6 WEEK INTERVALS)	ITEM NUMBER
1	M-ONE	.015 Cu Nitanium 27° with EZ Stops™ Delivery System	Begin leveling, aligning, and rotations	5-6 weeks	1 appointment	103-M1
2	M-TWO	.020 × .020 Cu Nitanium 35° with EZ Stops Delivery System	Complete leveling, aligning, and elimination of rotations. Arch development is initiated, 3 dimensional control of wire will begin initial torque control	6-18 weeks, based on complexity and clinical judgement	2-3 appointments	103-M2
3	M-THREE	.019 × .025 Beta Titanium	Detailing and finishing	8-12 weeks	2-3 appointments	103-M3B


M-SERIES WIRE SEQUENCE - FOR CERAMIC BRACKET SYSTEMS

Follow the 3-Wire Sequence and add the wire below prior to using the M-THREE.

	WIRE NAME	DESCRIPTION	OBJECTIVE	TIME IN TREATMENT	NUMBER OF APPTS. (5-6 WEEK INTERVALS)	ITEM NUMBER
	M-TWO.FIVE	.019 × .025 Cu Nitanium 35° with EZ Stops Delivery System	For final bracket alignment prior to M-THREE wire with ceramic brackets	3-4 weeks	1 appointment	103-M2.5

NEW
SIZE

EZ INVENTORY CONTROL

MAXILLARY							SLX 3D Metal 		SLX 3D Clear 	
	Description	Color-Code	Tooth#	Torque	Ang	Antirotation	.022 R	.022 L	.022 R	.022 L
CENTRALS	—	BLACK	U1	+17°	+5°	0°	777-UR1H-10	777-UL1H-10	776-UR1H-5	776-UL1H-5
	—	BLACK	U1	+12°	+5°	0°	777-UR1-10	777-UL1-10	776-UR1-5	776-UL1-5
LATERALS	—	PINK	U2	+12°	+8°	0°	777-UR2H-10	777-UL2H-10	776-UR2H-5	776-UL2H-5
	—	PINK	U2	+8°	+8°	0°	777-UR2-10	777-UL2-10	776-UR2-5	776-UL2-5
CUSPIDS	Hook	GREEN	U3	+7°	+9°	0°	777-UR3H-HK-10	777-UL3H-HK-10	776-UR3H-HK-5	776-UL3H-HK-5
	Hook	GREEN	U3	0°	+9°	0°	777-UR3-HK-10	777-UL3-HK-10	776-UR3-HK-5	776-UL3-HK-5
BICUSPIDS	—	PURPLE	U4 & 5's	-7°	0°	0°	777-U45-10	777-U45-10	776-U45-5	776-U45-5
	Hook	PURPLE	U4 & 5's	-7°	0°	0°	777-UR45-HK-10	777-UL45-HK-10	776-UR45-HK-5	776-UL45-HK-5
1 ST MOLARS	—	WHITE	U6's	-14°	0°	12°DO	977-UR6-HK-10	977-UL6-HK-10	976-UR6-5	976-UL6-5
2 ND MOLARS	—	GREY	U7's	-14°	0°	10°DO	977-UR7-HK-10	977-UL7-HK-10	—	—

MANDIBULAR							SLX 3D Metal		SLX 3D Clear	
	Description	Color-Code	Tooth#	Torque	Ang	Antirotation	.022 R	.022 L	.022 R	.022 L
ANTERIORES	—	YELLOW	L1&2's	-1°	0°	0°	777-L12-10	777-L12-10	776-L12-5	776-L12-5
	—	YELLOW	L1&2's	-6°	0°	0°	777-L12L-10	777-L12L-10	776-L12L-5	776-L12L-5
CUSPIDS	Hook	BLUE	L3	0°	+5°	0°	777-LR3-HK-10	777-LL3-HK-10	776-LR3-HK-5	776-LL3-HK-5
	Hook	BLUE	L3	-6°	+5°	0°	777-LR3L-HK-10	777-LL3L-HK-10	776-LR3L-HK-5	776-LL3L-HK-5
1 ST BICUSPIDS	—	GREY	L4	-12°	+2°	0°	777-LR4-10	777-LL4-10	776-LR4-5	776-LL4-5
	Hook	GREY	L4	-12°	+2°	0°	777-LR4-HK-10	777-LL4-HK-10	776-LR4-HK-5	776-LL4-HK-5
2 ND BICUSPIDS	—	RED	L5	-17°	+2°	0°	777-LR5-10	777-LL5-10	776-LR5-5	776-LL5-5
	Hook	RED	L5	-17°	+2°	0°	777-LR5-HK-10	777-LL5-HK-10	776-LR5-HK-5	776-LL5-HK-5
1 ST MOLARS	Hook	WHITE	L6's	-25°	0°	2°DO	977-LR6-HK-10	977-LL6-HK-10	—	—
2 ND MOLARS	Hook	YELLOW	L7's	-10°	0°	0°	977-LR7-HK-10	977-LL7-HK-10	—	—

CARRIERE® KITS (Call for availability)				SLX 3D Metal		SLX 3D Clear	
Rx	Description	QTY of sets	Total brackets	Item numbers .022		Item numbers .022	
STD TORQUE	U/L 5x5 kit with hooks on 3's	1	20	777-KIT-HK		776-KIT-HK	
	U/L 5x5 kit with hooks on 3's, 4's, 5's	1	20	777-KIT-HKS		776-KIT-HKS	
	U/L 6x6 kit with hooks on 3's & 6's	1	24	777-KIT6-HK		776-KIT6-HK	
	U/L 6x6 kit with hooks on 3's, 4's, 5's, 6's	1	24	777-KIT6-HKS		776-KIT6-HKS	

SLX 3D Self-ligating Buccal Tubes incorporate all of the amazing features of **SLX 3D Brackets** to complement the revolutionary appliance system.

Another **HSD first-clear ceramic upper first molars**. Now your patients can smile all day, every day, with confidence, with the most cost-effective, complete aesthetic solution available.



THE SAGITTAL FIRST REVOLUTION

**Simplify & shorten treatment
with predictable results.**

The **SAGITTAL FIRST** Philosophy is a ground-breaking approach that simplifies and shortens Class II and Class III treatment. It employs the **MOTION 3D** Appliance to treat the AP dimension at the beginning of treatment before placing brackets or aligners. By resolving the most difficult part of treatment first, you can achieve a Class I platform in 3 to 6 months, shortening total treatment time by a minimum of 6 months. You know how excited patients and parents become when you mention shorter treatment times!

PREDICTABLE

MOTION 3D Class II Appliance

INNOVATIVE

SLX 3D Bracket System

ATTACH-LESS

SLX Clear Aligners



CARRIERE® | SLX 3D™

For more information on our products and educational offerings, please contact us:

HenryScheinOrtho.com

Customer Service: 888.851.0533 | In the U.S.: 800.547.2000

Outside the U.S.: +1(760.448.8600 | Canada: CERUM 800.661.9567

To email an order: USASales@HenryScheinOrtho.com

To email an order from outside the U.S.: IntlOrders@HenryScheinOrtho.com

Ortho Organizers, Inc. 1822 Aston Ave. Carlsbad, CA 92008-7306 USA

© 2019 Ortho Organizers, Inc. All rights reserved. PN 999-345 Rev. B 08/19. US Patent 10,085,824

